

PCLock 1.0 Manual

What is PCLock	2
System Requirements	2
Install PCLock	2
Use PCLock for the First Time.....	3
PCLock Main Interface	3
Lock PC	4
Unlock PC	5
Disable Locking after enabling it.....	6
Locking Behaviour	6

What is PCLock

PCLock is a security utility bundled with PenDrive using Phison's hardware solutions. It is meant to be run from the PenDrive itself and functions like mobile lock for the PC you are working on. If you enable the Lock and remove your PenDrive from the USB port, the PC will be locked (so it is no longer usable, keyboard and mouse are blocked) until you inserted your particular PenDrive back into the USB port to unlock it.

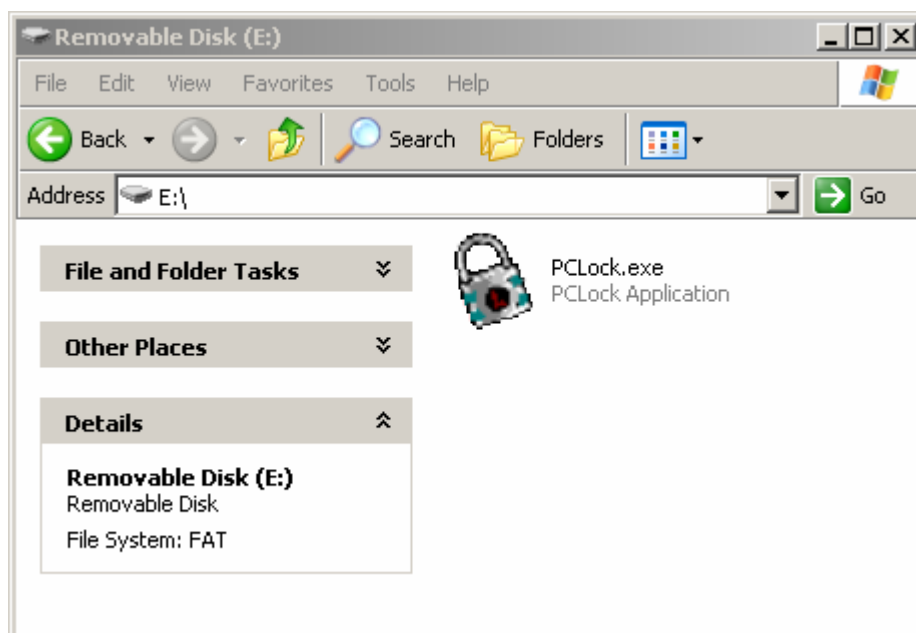
System Requirements

Microsoft Windows Platform

PenDrive using Phison's solutions

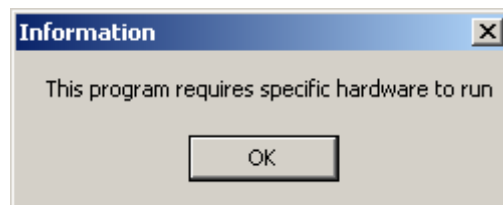
Install PCLock

You do not need to install PCLock to use it. The program consists of a single executable file that can only be run directly from a PenDrive using Phison's hardware solutions. To start using the program, simply download the PCLock program from Phison's web site to your PenDrive, and double click on the PCLock icon to start using the program.

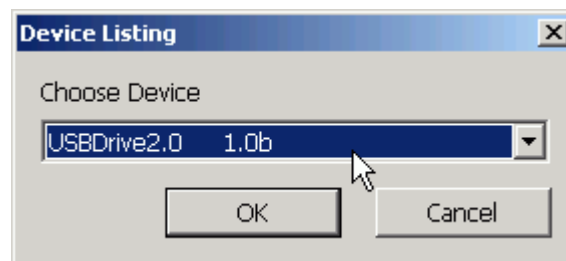


Use PCLock for the First Time

When you start using PCLock for the first time, the program should ask to you to provide a hardware locking device.



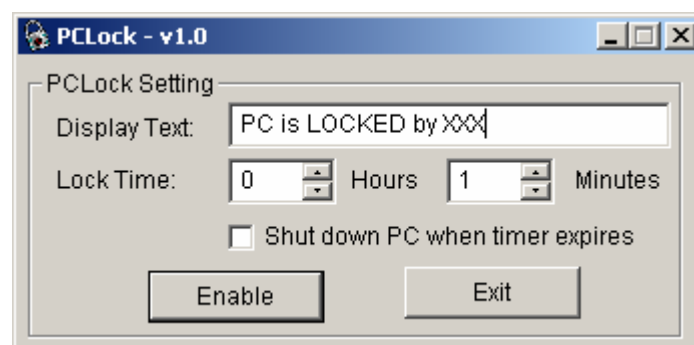
Click on OK, and you see something like this:



PCLock needs to run on Pen Drive using Phison's hardware solution, so please choose the Pen Drive device from the list that uses Phison's hardware solution and click on the OK button to continue. And you should now see PCLock's main interface.

PCLock Main Interface

The following is a sample screenshot of the PCLock's main interface.



As you can see, the interface is very simple and easy to use.

You should also note that the PCLock does not appear in the task bar, but instead in the system tray.



Right click on the task tray icon for options to Restore and to Exit the Program.

Back to the main interface, you can enter a string of text in the Display Text field. This string will be displayed on the screen when the PC is locked. For example, you could type in "Locked by John Smith" to inform other people that you are the person who locked the PC.

You can also specify how long you want to lock the PC for. The maximum duration you can lock a PC is about 100 hours. (Actually, it's 99 hours and 59 minutes)

Normally, PCLock will simply release the lock when the timer expires, returning control of PC. However, you can also specify what PCLock should do when the timer expires. You can check the "Shut down PC when timer expires" checkbox if you are paranoid and want the PC to shutdown automatically when the timer has expired.

Lock PC

If you run the program, and then remove the PenDrive, the PC will NOT be locked. This is because you have to "physically" enable locking in PCLock.

To enable locking, first enter all the required information in the main dialog. (The text to display, the lock duration, and whether to shutdown PC or not when timer expires) Then, with the PenDrive you wish to use as the key inserted in the USB port, click on the Enable button.

Note that if you didn't have PenDrive inserted in the USB port, PCLock will ask you to insert one to use as the key.

After clicking on the Enable button, PCLock should minimize itself to the system tray, waiting to be locked.

You can then remove your PenDrive from the USB port to lock the PC. You should then see something similar to the following indicating that the PC is locked.



Note that even if you reboot the computer now, the PC will stay locked. For more information, please see the Locking Behaviour section.

Unlock PC

You can only unlock a locked PC using the PenDrive originally used to lock the PClock. (It's the PenDrive that was inserted in the USB drive when you clicked on the Enable button)

To unlock a locked PC, insert the PenDrive into the USB port. (You might have to wait a few seconds for the OS to recognize the device) The locking screen will disappear and the PClock main interface shown again.

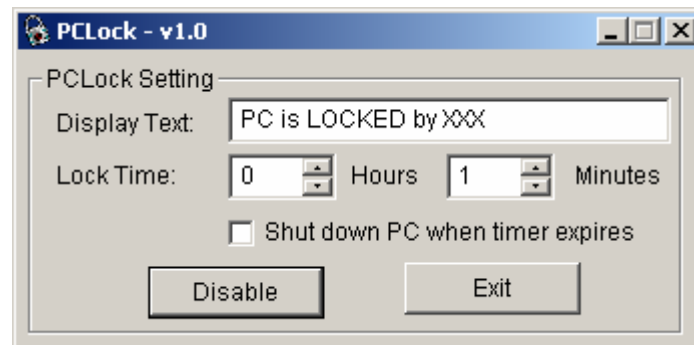
If for some reason, the locking screen does not disappear, remove and reinsert the PenDrive again. This is because OS sometimes fails to recognize the PenDrive properly.

If you do not have to original key, there is one last way to unlock the PC. It's to wait until the timer expires. PClock will release control of the PC when the PC has been locked continuously for the duration specified by the original locker. For more information, please see the Locking Behaviour section.

Disable Locking after enabling it

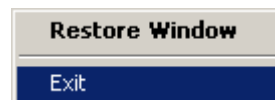
Follow the following steps if you wish to disable locking after you have clicked on the Enable button.

First, restore the PCLock main dialog by double-clicking on its icon in system tray. You should see PCLock's main dialog. Note that what was the Enable button now is the Disable button.



Click on the Disable button to disable locking.

Alternatively, you can simply quit the program by first right click on the system tray icon and choose Exit from the menu presented.



Locking Behaviour

Once locked, PCLock will continuously lock the PC for at least the amount of the time specified by the original locker in the Lock Duration fields.

During the time the PC is locked, if the PC is rebooted, the PCLock will resume once the OS has restarted, and reset timer from zero.

When the timer has expired, PCLock will return the control of the PC, or reboot according to the setting of the original locker. But in any case, if rebooted, PCLock will NOT resume again. This is to prevent the possibility that a user lose the PenDrive used as key to lock a PC. All user has to do is to wait for the timer to expire and the PC will be usable again.